

# 「保留愛丁堡廣場建築群為古蹟」之文件摘要

文化傳承監察(Heritage Watch)

9 November 2009

## 目的與範圍

我們要求古物諮詢委員會賦予愛丁堡廣場建築群為一級歷史建築群的地位，以使之列為古蹟。愛丁堡廣場建築群範圍包括，愛丁堡廣場、皇后碼頭、檢閱台、大會堂與紀念花園、愛丁堡廣場碼頭(天星碼頭)與天星碼頭停車場。

## 愛丁堡建築群之重要性與論據

- A. 建立香港第一個法定歷史和文化景觀，使香港不致落後於當前的國際和國家物質文化遺產保護標準。
- B. 「歷史景觀」或「重要文化景觀」的概念已被具權威性的古物保護標準所採用，如巴拉憲章。多個不同國家和城市，包括紐約，中國，台灣和澳門已經將之付諸實行，如澳門的歷史城區。這反映有形文化遺產保護不局限於個別建築，它可以是一個地、群集的建築、景觀，甚至一個地區。古物諮詢委員會的現行做法多更宣布個別的建築物為古蹟或歷史建築物，但根據古物古蹟條例（Cap.53）允許委員會宣布地方和建築物為古蹟或歷史建築。愛丁堡建築群的獨特和富有意義性，為香港建立第一個歷史和文化景觀提供了契機。
- C. 據聯合國教科文組織亞洲太平洋地區文化顧問恩格爾哈特(Richard Engelhardt)所言，「保存城市形態肌理和活化公共空間的重要性已超越建築物保存的位置，成為發展商、政治人物、和大眾最重視的保育議題。如果沒有保存城市原有的結構形態，市民及遊客將無法閱讀城市的歷史肌理，更無法理解其它[單棟建築物]的保育工作。」
- D. 愛丁堡建築群具對香港有極重大的歷史和文化價值，而它也符合古物諮詢委員會對歷史建築的 9 個擬議歷史主題中的 6 個，如下：
  - 主題一：建立殖民統治，維持社會穩定和治安  
皇后碼頭、大會堂標誌著每位新來港總督和大多數成員的英國王室抵達香港後的路線。此外，建築群也紀錄了多個香港第一次，如大會堂是首個為區議會選舉計票的地方、皇后碼頭則為連接香港島和九龍的第一個交通工具樞紐等。

- *主題二：對香港整體富有重社會及文化意義*  
整個公認為地標的建築群建於 20 世紀 50 年代是發生香港社會運動（天星碼頭 1960 年代）和保護釣魚台運動（1970 年代）的地方，因此，也被視為培養港人文化認同長成的搖籃。此外，無數具里程碑意義的事件在此舉行，加上為電影、音樂錄像，甚至結婚照的拍攝場地，實是延續了社區的集體記憶。
  
- *主題三：殖民時期的經濟活動*  
這是展覽香港產品的地方，也經常舉辦貿易展覽會。
  
- *主題四：殖民地的社會發展*  
為不同國家，社會背景和性別的人們提供聚集的地方。在建築群內有展覽大廳、豪華餐廳、圖書館等設施，為社會上富裕的人士和普通人民提供不同服務。同樣，也吸引了大陸商人及非華裔，如菲律賓人視之為社會聚集的地方。
  
- *主題五：殖民時期的教育改革*  
在廣場內發生的中文運動和要求重新開放寶血金禧中學活動等皆促使了社會中的教育改革。
  
- *主題六：香港戰後時期的多元文化、經濟繁榮發展*  
提供各種服務的香港大會堂及廣場空地所塑造了建築群平易近人的形象，吸引社會不同階層人士的使用，如外藉傭工(聚會、示威)、本地工人(享受午餐)、學生，一般公眾和社會領袖(大會堂高座舉行的活動)等。

## 未來路向

在這個建築群內發生的事，令建築群成為香港人心不可或缺的場景，並刻畫出一串串城市發展改變的足跡。我們強烈建議授予愛丁堡廣場建築群一級歷史地位，作為申報整個“歷史景觀”為古蹟的第一步。最後，我們建議古物諮詢委員會應開放公眾申請歷史建築物的渠道。

# Summary “Preserving Edinburgh Place as a Monument”

Heritage Watch  
9 November 2009

## Purpose and Boundary

This petition urges AAB to confer Edinburgh Place Grade I status as Historic Landscape of Cultural Significance and to pursue this to be declared a Monument. Edinburgh Place and its defining structures include Edinburgh Square, Queen’s Pier, the Dias, the City Hall complex and Memorial Garden, the Star Ferry and the Star Ferry Car Park.

## Significance of the Complex and Arguments

- A. Declare the first historical and cultural landscape in Hong Kong in line with prevailing international and national standards of tangible cultural heritage conservation.
- B. The concept of “historical landscape”, or “landscape of significant cultural important” has been introduced in authoritative conservation standards, like the *Burra Charter* and is used by various countries and cities, including New York, China, Taiwan and Macao (e.g. Historic Centre of Macao). Conserving tangible cultural heritage is not restricted to individual buildings but can be a site, a cluster of buildings, a landscape and even a district. The current practice of AAB has been to declare monuments and historical buildings individually, however, the Antiques and Monuments Ordinance (Cap.53) allows declaring a **place**, building or **site as a monument**. The uniqueness and signification of Edinburgh Place may lead to the establishment of first historical and cultural landscape in the urban area of Hong Kong.
- C. **According to Richard Engelhardt, UNESCO Regional Adviser for Culture in Asia and the Pacific**, “[f]irst of all, even more than the preservation of buildings, **the preservation of the urban morphology and the revitalisation of public space has become the most important conservation issue** for developers, politicians, and the public alike. Without the preservation of the original structural skeleton of the town, the historic urban fabric will be unreadable and all other conservation efforts will be incomprehensible to the residents and visitors alike.”
- D. The Complex has significant historical and cultural values for Hong Kong at territorial level and it matches 6 out of 9 themes under AAB’s grading principles for Historical Buildings:
  - *1<sup>st</sup> : Establishment of Colonial Rule and Maintenance of Social Stability, Law & Order*

Edinburgh Place, including Queen's Pier, the Dias and the City Hall marked the arrival of Governors and members of the British royal family. The place has been used to hold ceremonies including the opening of the legal year by the Judiciary. Besides, the first vote-counting for District Boards and Urban Council and Legislative Council elections took place here.

- *2<sup>nd</sup> : Social and cultural significance for HK at territorial level*

The Complex is a **recognized landmark** used by the public since 1950s and a **cradle of cultural identity** with the start of social movements, including the Star Ferry Pier demonstrations in the 1960s and the Protect Diaoyutai Movement Pier in 1970s. Edinburgh Place has perpetuated the community's **collective memory** with numerous milestone events and as the location for – famous and less famous - films, music videos and marriage photographs.

- *3<sup>rd</sup>: Significantly important of “Economic Activities in the Colonial Period”*

It served as an exhibition place for Hong Kong export products and trade fairs.

- *4<sup>th</sup>: Significantly important in Social Development of the Colony*

It provided a place for social gatherings by people from all nations, social backgrounds and sexes. Both wealthy and ordinary Chinese people enjoyed memorable times in Edinburgh Place including its public space, exhibitions hall, restaurants, and library.

- *5<sup>th</sup>: Significantly important for Educational reform in the Colonial times*

Social protests leading to subsequent reforms including Protests of the Chinese Language Movement and Protests to demand the re-opening of the Precious Blood Golden Jubilee School also took place at Edinburgh Place.

- *6<sup>th</sup>: Demonstrated cultural diversity in Hong Kong*

The various services provided in City Hall and the various public spaces shape Edinburgh Place as a centre for all walks of life, including migrant workers holding social gatherings, and political functions, local workers enjoying their lunch boxes, and students and social leaders holding functions at City Hall.

## **Way Forward**

Given the historic happenings which took place and the many footprints left behind by people from Hong Kong and abroad, Edinburgh Place has become a landscape of great significance in the development of Hong Kong and its people. Conferring a Grade I status of the Edinburgh Place Complex is the first step in declaring this entire “historical landscape” a monument.

# Preserving Edinburgh Place as a Monument

Heritage Watch<sup>1</sup>

9 November 2009

## Perspective

Edinburgh Place as a Historical Landscape of Cultural Significance

## Petition

We urge the Antiquities Advisory Board to confer grade I status on the Edinburgh Place and its defining structures as a Historical Landscape of Cultural Significance with the aim of declaring this historical landscape a Monument.

## I. The Purpose

1. The purpose of this petition is to urge the AAB to grade Edinburgh Place as a monument. We propose that a nuanced “historical landscape” preservation method should be adopted by the AAB in this grading exercise as a way to move forward.
2. Edinburgh Place with its defining structures comprises a unique landscape in the heart of our city. **Edinburgh Place** was designed as a civic centre of Hong Kong, an integrated place for celebration, ceremony and culture. The Edinburgh Place and its defining structures, including Edinburgh Square, Queen’s Pier, the Dias, the City Hall complex and Memorial Garden, the Star Ferry and the Star Ferry Car Park can and should be preserved together as a unique cluster, a “historical landscape” of “cultural significance”.<sup>2</sup> In the Burra Charter cultural significance means ‘aesthetic, historic, scientific or social value for past, present or future generations. Cultural significance is a concept which helps estimate the value of places. The places that are likely to be of significance are those which help

---

<sup>1</sup> This document is drafted by members of Community Cultural Concern (Desmond Sham, YC Chen and Mirana Szeto) on behalf of Heritage Watch.

<sup>2</sup> Although Star Ferry and Queen’s Pier are now demolished, the integrity of the original sites can be restored as far as possible. When the government reconstructs the Star Ferry clock tower, it can for example, use methods to delineate the original boundary of the entire pier if a full reconstruction of the pier is impossible. Moreover, the government still has the option of reinstating Queen’s Pier in situ. In this way, the structural integrity of the entire historical landscape can still be discerned and preserved.

understand the past and/or enrich the present, and which will be of value to future generations. These principles are set out in the Guidelines to the Burra charter, Australia ICOMOS. **According to Richard Engelhardt, UNESCO Regional Adviser for Culture in Asia and the Pacific, “[f]irst of all, even more than the preservation of buildings, the preservation of the urban morphology and the revitalisation of public space has become the most important conservation issue for developers, politicians, and the public alike. Without the preservation of the original structural skeleton of the town, the historic urban fabric will be unreadable and all other conservation efforts will be incomprehensible to the residents and visitors alike.”**<sup>3</sup>

3. This paper sets out the argument for Edinburgh Place as a whole to be graded and ultimately to be declared a monument. We strongly recommend that Edinburgh Place and its defining structures are graded together as one “historical landscape.” The entrance to City Hall, the Dias and Queen’s Pier are located on one axis and together formed Edinburgh Place, a civic place for the community, ceremony, celebration and culture. We note that on May 2007, the AAB decided that Queen’s Pier is a Grade I Historical Building and the SHA informed the CE that it was short of monument status.
4. Our proposal will not only allow Hong Kong to preserve the *historical corridor*<sup>4</sup> that extends from the Legco building, Statue Square to the Edinburgh Place Complex, but also to preserve this rare civic space in Central from the encroachment of development and commercial interests. Moreover, given the significance of the historic events, Edinburgh Place and its defining structures will not only remain an attractive public space, but also a tourist attraction and place for education.

## **II. Edinburgh Place in Perspective**

5. Edinburgh Place in Central is a public civic centre built in the 1950s to 1960s. Edinburgh Place was designed by British architects Ron Phillips and Alan Fitch. The complex included Queen’s Pier, the Dias, the City Hall complex and Memorial Garden, the Star Ferry (Edinburgh Place Ferry Pier) and the Star Ferry Car Park and Edinburgh Square itself. The buildings of Edinburgh Place were built in the 1950s – 1960s as an integral complex of civic facilities. Together, they form a distinctive cluster of “modernist style”

---

<sup>3</sup> See Engelhardt, Richard A. (2002) “The Management of World Heritage Cities: Evolving Concepts, New Strategies”, Keynote speech at “The Conservation of Urban Heritage: Macao Vision” International Conference, Macau, 10-12 September 2002. Conference Proceeding, page 33-48. Source: [http://heritage.icm.gov.mo/en/knowledge/vision/vision\\_033.pdf](http://heritage.icm.gov.mo/en/knowledge/vision/vision_033.pdf). Professor Richard Engelhardt is UNESCO Regional Adviser for Culture in Asia and the Pacific, and Visiting Research Professor, Faculty of Architecture, HKU.

<sup>4</sup> In the historical trail designed by the AMO, the “Central and Western Heritage Trail” begins at the Edinburgh Place Complex. [http://en.wikipedia.org/wiki/Central\\_and\\_Western\\_Heritage\\_Trail](http://en.wikipedia.org/wiki/Central_and_Western_Heritage_Trail)

architecture and a rare representation of architecture of that period still existing in Hong Kong. It is a unique cluster, a “historical landscape” of “cultural significance” and an irreplaceable part of the urban morphology right at the heart of the city. It is a cultural and social centre and public space at the heart of the central business district and centre of political power.

6. Politically, Edinburgh Place reflected the then governor’s effort to expand facilities for the people, which included Victoria Park and an extensive public housing scheme. Both Victoria Park and the Edinburgh Place Complex were built on prime reclaimed land at the harbor-front, but were nonetheless, given to Hong Kong people for their free civic enjoyment rather than being sold in return for revenue.



Figure 1: The civic space of the Edinburgh Place Complex – a cluster of modernist style buildings. Source: Google Maps (left).

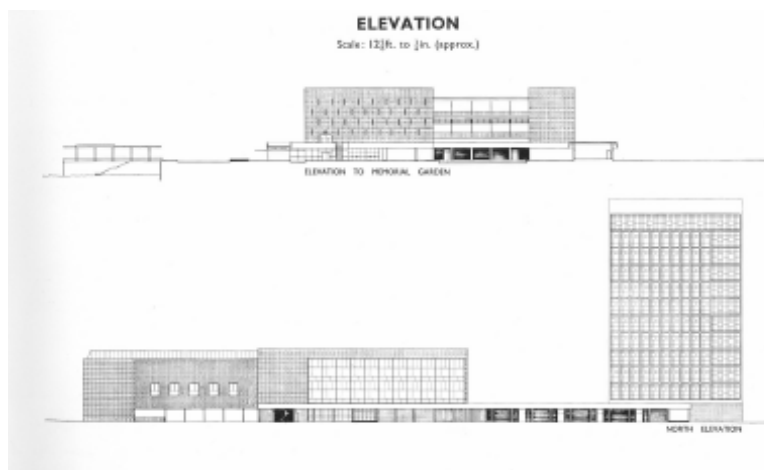


Figure 2: City Hall and the Queen’s Pier were conceived together as a complex. Source: Government Information Service. (1966) *City Hall, Hong Kong*. Hong Kong: Government Printer, p.5.

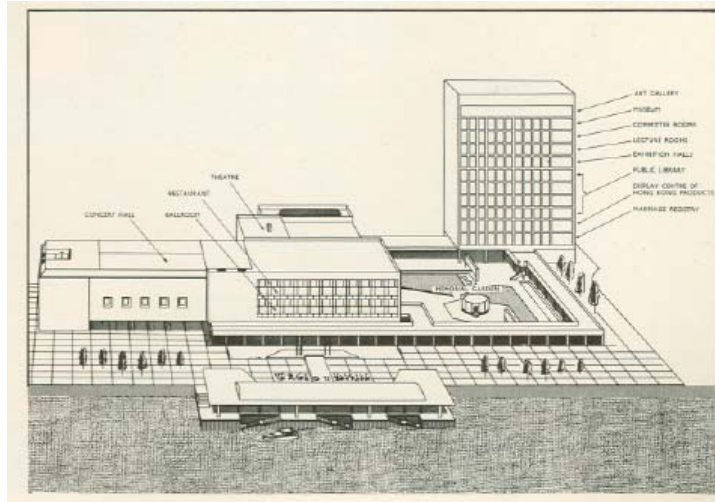
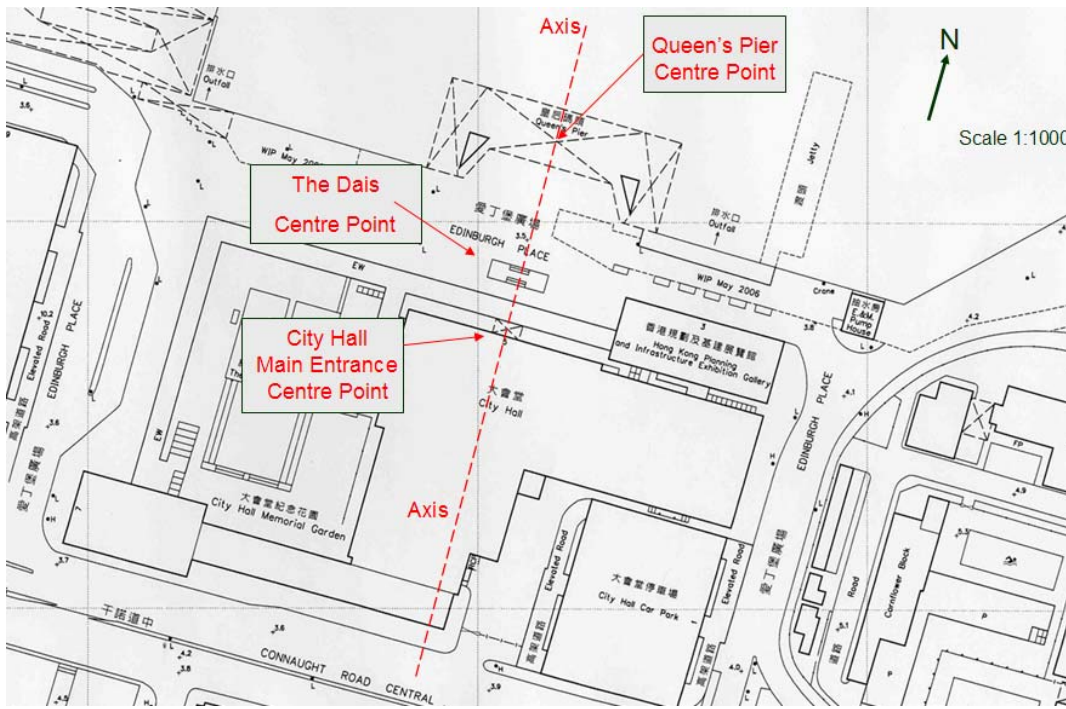


Figure 3: The ceremonial axial starting from Queen's Pier through the Dias on Edinburgh Place and into City Hall.  
 Source: 《一九六七年 五周年——大會堂：香港的文化中心》



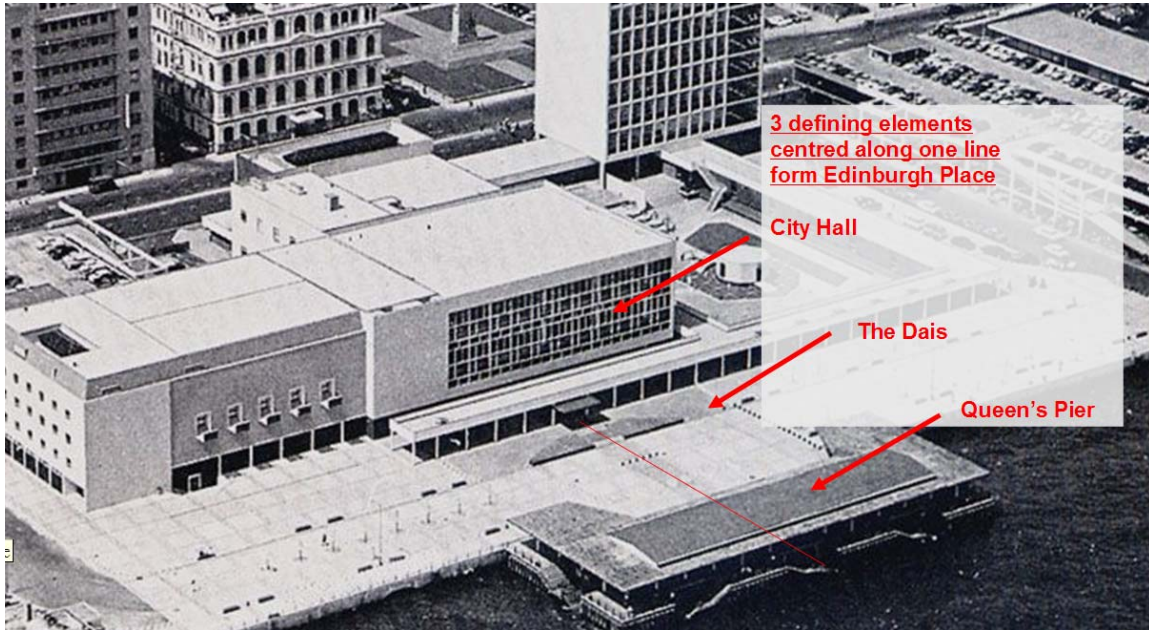


Figure 4: The architectural axis by design.

### **III. Historical Landscape: Conserving tangible cultural heritage**

7. The current mainstream criterion of historical building conservation is based on the single individual “building” concept. Yet, according to the prevailing principles in conserving tangible cultural heritage, the concept of “historical landscape” or “landscape of significant cultural importance” have been introduced by different countries and cities.
8. New York passed the “Landmark Preservation Law” in the 1960s. The “landmark” concept is not limited to single historical buildings but includes also “landmarks, portions of landmarks, landmark sites, interior landmarks, scenic landmarks and historic districts.”<sup>5</sup> In other words, the tangible cultural heritage being conserved can be an individual building, **a site, a cluster of buildings, and even a district**.
9. The international tangible cultural heritage conservation standard has been introduced by the International Council of Monuments and Sites (ICOMOS), and China is a member country. *The Burra Charter*<sup>6</sup> clearly states that the “place” to be conserved refers to the “**site, area, land, landscape**, building or other work, **group of buildings** or other works, and may include components, contents, spaces and views”, which include “memorials, trees, **gardens, parks, places of historical events, urban areas**, towns, industrial places, archaeological sites and spiritual and religious places.”<sup>7</sup> In Article 2 of the *Burra Charter*,

<sup>5</sup> *New York City Charter 2004*.

<sup>6</sup> The complete name of the charter is known as *Australia ICOMOS charter for the conservation of places or cultural significance*, published in 1999.

<sup>7</sup> The highlight is made by the writer of this paper.

it clearly states that ,

- “ 2.1 Places of cultural significance should be conserved.  
 2.2 The aim of conservation is to retain the cultural significance of a place.  
 2.3 Conservation is an integral part of good management of places of cultural significance.  
 2.4 Places of cultural significance should be safeguarded and not put at risk or left in a vulnerable state. ”

10. In 2004, the ICOMOS meeting in China published the most updated *China Principles*<sup>8</sup>, which further develops *The Burra Charter*. The *China Principles* also include “modern and contemporary places and commemorative buildings, and those historic precincts (villages or towns)” into the definition of heritage. Right from the beginning, in Article 1, the *Principles* stated the concern for **“landscape” and area**, and not only for individual buildings.

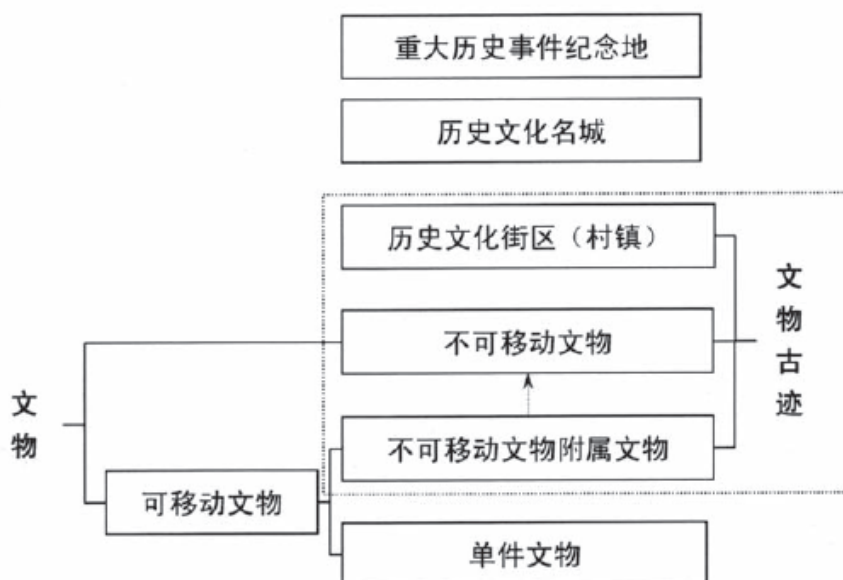


Figure 4: Historical landscape preservation in the *China Principles*.

Source: *China Principle*

11. Besides Mainland China, Taiwan and Macau also define tangible cultural heritage in terms of “landscape” and “area” and not merely individual buildings. The Taiwanese government provides subsidy for the preservation and conservation of monuments, historical buildings, clusters and settlements<sup>9</sup>. **The “Historic Centre of Macau” (*Centro Histórico de Macau*) is preserved as a UNESCO World Heritage Site, a “historical landscape” in its entirety. The Hong Kong government MUST NOT lag**

<sup>8</sup> The complete name is *Principles for the Conservation of Heritage Sites in China*.

<sup>9</sup> 行政院文化建設委員會《古蹟、歷史建築及聚落保存維護補助作業要點》

**behind international and national standards in our actual practice.**

12. According to Cap. 53 of the Antiques and Monuments Ordinance, “[The] Authority may [...] declare any **place**, building, **site** or structure, which the Authority considers to be of public interest by reason of its historical, archaeological or palaeontological significance, to be a monument, historical building or archaeological or palaeontological **site** or structure.”<sup>10</sup> In practice, the AAB has so far graded historical buildings and structures individually and has yet to consider grading **places, sites, landscapes or clusters**. The AAB will be highly commended for its endeavor to conserve Hong Kong’s **first historical and cultural landscape in the urban area** by grading and conserving the entire Edinburgh Place as a “historical landscape” and recommend it to be declared a Monument.

**IV. Historical and Cultural significance of Edinburgh Place**

13. Edinburgh Place has significant historical and cultural values for Hong Kong, and the value of this civic space as a public square and complex of buildings and structures are important to the entire city. Edinburgh Place matches most historical themes proposed by the AAB, including 6 out of the 9 themes in AAB grading principles.<sup>11</sup>
14. **First theme:** The Edinburgh Place Complex is **associated with significant events, phases, activities and historical figures at territorial level. It is significantly important in the historical development of Hong Kong at territorial level.** Over the colonial period, the Edinburgh Place, including Queen’s Pier, the Dias and City Hall served as the ceremonial landing place for new Governors, which were then greeted at the Dias and then delivered their oath to serve as Governors of Hong Kong in City Hall. The quarter/complex as a whole has marked every new page of the gubernatorial chapter in Hong Kong history. The Edinburgh Place Complex is significant in the **“Establishment of Colonial Rule and Maintenance of Social Stability, Law & Order”** and **“Military and Guerilla Activities during Japanese Invasion and Occupation”**.
15. **Establishment of colonial rule:** Edinburgh Place is formed by the placement of Queen’s Pier, the Dias and the entrance to City Hall along one axis. All important ceremonies symbolizing colonial rule were performed here. Each arriving new Governor would land at Queen's Pier, inspect the Guards of Honour from the Dias before being sworn in inside

---

<sup>10</sup> The highlights are made by the writers of this paper.

<sup>11</sup> Antiquities Advisory Board. “Result of Assessment of 1,444 Historical Buildings, Annex C: Proposed Historical Themes”.

City Hall.<sup>12</sup> This unique historical axis should be preserved intact and in its entirety. At this place, citizens greeted Queen Elizabeth II in 1986, when she landed at Queen's Pier with Prince Philip, after their historic first visit to China. The people of Hong Kong welcomed Princess Diana and Prince Charles when they arrived from at Queen's Pier and then proceeded to the City Hall. Edinburgh Place was an important site where legislative ceremonies took place. For the ordinary people, this place has performed (and are still performing) important civic and political functions, from the post-War colonial period well into present-day. Their removal would scrap forever an important physical link with an important phase in the development of Hong Kong.



Figure 5: Her Royal Highness Princess Alexandra of Kent, Nov. 3, 1961 with Governor Sir Robert-Black GCMG, OBE.



Figure 6: Left: Arrival Ceremony at Queen's Pier, Princess Margaret and Lord Snowdon inspect the Guard of Honour at Edinburgh Place, in front of City Hall. Right: Crowds gather in Edinburgh Place outside City Hall to greet the royalties.

<sup>12</sup> EIA: A survey report of Historical Buildings and Structures within the Project Area of the Central Reclamation Phase III, Chan Sui San Peter for the HK Government, February 2001.



Figure 7: Left: 1986 Royal Visit: Queen Elizabeth II and King Philip land at Queen’s Pier after their historic first visit to China. They were accompanied by Governor Sir Murray MacLehose.



Figure 8: July 1992, Govenor Christopher Patten lands at Queen’s Pier Welcomed at Edinburgh Place, and is sworn into office in City Hall

16. **Establishment of the Administrative and Judiciary System:** The City Hall at the Edinburgh Place is the place where vote-counting of the elections of District Boards, Urban Council and Legislative Council took place. The Urban Council, the first publicly elected municipality council in Hong Kong also held meetings in City Hall. This place commemorates the transformation and election of the Urban Council, which was a pivotal process in the transformation of the urban administration and the election system in Hong Kong. Edinburgh Place hosts the opening ceremony of every new year by the Judiciary.

17. **Establishment of Public Infrastructures and Transport:** Edinburgh Place consisted of several public piers, including “Star Ferry Pier”, which used to be called the “Edinburgh Place Pier”, and “Queen’s Pier”. During their entire existence, they acted as significant and important transport infrastructure connecting Hong Kong Island and the Kowloon Peninsula. The Star Ferry Car Park was one of the first multi-storey public car parks in Hong Kong, built in 1957, the same year as the Yau Ma Tei Car Park Building. Two years

later, the City Hall Car Park was built.

18. **Military and Guerilla Activities during Japanese Invasion and Occupation:** The City Hall Memorial Garden and Cenotaph were “built in memory of the glorious dead in the war years between 1941 and 1945.”<sup>13</sup>

19. **Second Theme: The Edinburgh Place has significant social and cultural values for Hong Kong at the territorial level.** It is important as one the most recognized symbolic and visual landmark in the entire territory for the community and tourists alike. It is important in depicting “cultural identity” and perpetuating “collective memory” of the community at territorial level. It has accumulated a lot of historical significance as a cultural quarter, a public space and a place of social empowerment, belonging to, and shared by the public.

20. **A symbol and visual landmark recognized by the community at the territorial level:** Since the Edinburgh Place Complex was built in the 1950s, it is deliberately kept as a public open space near the harbor. Its purpose is “to promote freedom of movement and a sense of unlimited space”<sup>14</sup>. Since the very earliest days of the building of Edinburgh Place, the government, the architects and the citizens have agreed that the whole complex is to serve the community as a whole.<sup>15</sup> The architects Alan Fitch and Ronald Philips declared that the government’s idea was “from the very first day” to established the place “as a Centre for the community.”<sup>16</sup> The classic Bauhaus style of the City Hall “set an architectural trend in Hong Kong making this very first multi-purpose civic center a landmark design for Hong Kong architecture” of the 1960s.<sup>17</sup>

---

<sup>13</sup> Hong Kong City Hall – Memorial Garden.

[http://www.lcsd.gov.hk/CE/CulturalService/CityHall/en/memorial\\_garden.php](http://www.lcsd.gov.hk/CE/CulturalService/CityHall/en/memorial_garden.php)

<sup>14</sup> Liz Heron. “Save Queen’s Pier, says architect of City Hall Complex”. *South China Morning Post*. 13 May 2007.

<sup>15</sup> For instance, in *City Hall 10<sup>th</sup> Anniversary Hong Kong Arts Festival 1972*, the government deliberately agrees that the City Hall “also represented a determined attempt to serve the community as a whole, and not a privileged minority” ([...]決定為整個社會服務，而不是只為少數特權份子服務。).

<sup>16</sup> From *The City Hall 1962-1992*, Hong Kong: Government Printer, 1962.

<sup>17</sup> Hong Kong City Hall – Introduction <http://www.lcsd.gov.hk/CE/CulturalService/CityHall/en/index.php>



Figure 9: Architects Alan Fitch & Ronald Philips in 1962.

Source: *The City Hall 1962-1992*.

21. **Depicting the “cultural identity” of the community at the territorial level:** Edinburgh Place is the “cradle” of Hong Kong’s “cultural identity”. It was where momentous public events took place, making it a “civic square” that gave birth to democracy and citizenship in Hong Kong. Its deliberate openness has made it a rallying point for small marches and protests, especially before the opening of the MTR, when it was THE key transport hub, making it a smaller version of Victoria Park, but nonetheless, a place of equal historical weight. Below are some examples of such historical events.

22. In 1966, when the colonial government accepted the fare-increase of Star Ferry despite huge social discontent and ignored the 40,000 strong anti-fare-hike signature campaign led by Elsie Hume Elliot, young activist Mr. SO Sau Chung started a peaceful hunger-strike at Star Ferry Pier in the Edinburgh Place Complex, joined by many sympathizers. So’s arrest was a catalyst in triggering mass protests on Kowloon side, which became the so-called **“Kowloon Disturbance”**. Historians agree that the anti-fare-hike protest at Star Ferry Pier is the first social movement in the 1960s and 1970s caused by the concern for local livelihood issues by the new locally born generation, the children of a previous generation of refugees and migrants. This is the paradigm-shift historical event marking the emergence of local “cultural identity” – exemplified by a locally born Hong Kong people.<sup>18</sup>

---

<sup>18</sup> 羅永生〈天星：香港意識的搖籃〉.《明報》，2006年12月21日.



Figure 10: Hunger strike to protest the fare increase of Star Ferry by Mr. SO Sau Chung in 1966.

23. The **“Protect Diaoyutai Movement”** started in the 1970s and continues in Hong Kong until today. The Queen’s Pier at Edinburgh Place is the birth-place of this demonstration of patriotism by local Hong Kong people. The significance of this ceremonial pier as a symbolic colonial site at the heart of the city and right on a busy transport hub made it the ideal venue for a demonstration of this nature. This movement, led by a locally born generation of young people coming of age in the 1970s is also recognized by historians as one of the key moments in the emergence of a locally born cultural identity. This marks the shift in Hong Kong mainstream mentality from a transit, migrant mentality of the previous generation towards a locally rooted sense of cultural identity and historical agency.



Figure 11: The Protect .Diaoyutai movement in the 1970s at Queen’s Pier.

24. The movement to make **“Chinese language an official language”** also began here at Edinburgh Place. This movement marked the emergence of Hong Kong people’s active

claim of local identity over and above the colonial culture brought over by the British colonial establishment. It is thus not an exaggeration to designate the Edinburgh Place as the “cradle” of Hong Kong “cultural identities”.

25. Perpetuating “collective memory” of the community at the territorial level: Edinburgh Place perpetuates the “collective memory” of the community at the territorial level. It has accumulated a lot of precious memories that belong to and are shared by the public.
26. **City Hall** at Edinburgh Place is the “most prominent center of culture and arts”<sup>19</sup> and the first such centers to be built in the colony. Different **milestone events** in Hong Kong “such as the early Hong Kong Festival, the Hong Kong Arts Festival in 1973, the Asian Arts Festival in 1976, the International Film Festival in 1977, and the International Arts Carnival in 1982, all have their inaugurations here. This has testified to the eminence of the Hong Kong City Hall in the international arts scene. Its significant role in promoting cultural exchanges undoubtedly merits the pride of Hong Kong people.”<sup>20</sup> Since the founding of the City Hall, it is regarded as the “cultural centre of Hong Kong”<sup>21</sup> and aims at providing cultural and leisure services for people in Hong Kong of different ages, sexes and social groups. The **first Hong Kong public library and museum** was established in the City Hall complex as well. **The City Hall Marriage Registry** is the most popular amongst marriage registries in Hong Kong.<sup>22</sup> The newly married couples like to take the photographs at Queen’s Pier, Star Ferry Pier and the Edinburgh Place.



Figure 12: The cover of the Chinese version of *City Hall: the cultural centre of Hong Kong: 1967, fifth anniversary*, Hong Kong: Government Printer, 1967.

<sup>19</sup> Hong Kong City Hall – Introduction <http://www.lcsd.gov.hk/CE/CulturalService/CityHall/en/index.php>

<sup>20</sup> Ibid.

<sup>21</sup> Hong Kong City Hall (1967) *City Hall : the cultural centre of Hong Kong: 1967, fifth anniversary*. Hong Kong: Government Printer.

<sup>22</sup> Hong Kong City Hall – Other Facilities – Marriage Registry. [http://www.lcsd.gov.hk/CE/CulturalService/CityHall/en/marriage\\_registry.php](http://www.lcsd.gov.hk/CE/CulturalService/CityHall/en/marriage_registry.php)



Figure 13: At the Marriage Registry, 1967.

Source: 《一九六七年 五周年——大會堂：香港的文化中心》。



Figure 14: Marriage photo at Queen's Pier, 2007.

Source: The authors of this paper.

## 27. Edinburgh Place was one of the stops of the **1964 Summer Olympics** torch relay.

Edinburgh Place is also a place where many Hong Kong movies, music videos and TV dramas are shot. The openness of this unique public place with minimum regulation (by police and security guards) has transformed this public Edinburgh Place into an ideal place for shooting, where producers rarely need to apply for outdoor shooting permission. Some examples of films, TV dramas and MTVs with the scenes from the Edinburgh Place are listed as follows:

馬楚成，《生日快樂》，香港：美亞電影製作有限公司，2007。

曾志偉，《最佳拍檔》，香港：新藝城影業公司，1982。

王晶，《精裝追女仔》，香港：永盛電影公司，1987。

陳可辛、李志毅，《新難兄難弟》，香港：電影人製作有限公司，1993。

曹建南，《精裝難兄難弟》，香港：天下電影製作有限公司，1997。

麥海珊，《唱盤上的單行道》，香港，2006。

無線電視的《大時代》

亞洲電視的《我和殭屍有個約會》

無綫電視的《水滸無間道》

無綫電視的《寫意人生》

無綫電視的《阿旺新傳》

無綫電視的《難兄難弟》

無綫電視的《東方之珠》

無綫電視的《創世紀 II 天地有情》

陳百強-凝望 MTV

陳百強無休止符 - 不 MTV

林憶蓮音樂特輯

Beyond- 《活著便精彩》 MV

Beyond- 《我早應該習慣》 MV

鄭融- 《愛得耐》 MV

許冠傑- 《鐘聲響起》 MV

28. **Third theme:** The Edinburgh Place has significant importance in the area of “**Economics Activities in the Colonial Period**”. The Edinburgh Place Complex is significantly important for commercial activities in the colonial period. Trade fairs of cars, books and other products started in Edinburgh Place. Edinburgh Place is significantly important for local industries. The 2nd Floor of the “High Block” was a display centre of Hong Kong products, as shown in *City Hall: the cultural centre of Hong Kong, 1967, fifth anniversary*.



Figure 15: Fashion show at City Hall.

Source: 《一九六七年 五周年——大會堂：香港的文化中心》.

29. **Fourth theme:** The Edinburgh Place Complex is a place with significant importance in “**Social Development of the Colony**”.

30. **Social Life of Wealthy Classes or Social Leaders in Urban Areas: The City Hall at the Edinburgh Place Complex** has been providing venues for social life of wealthy classes and social leaders in urban areas. The exhibition hall<sup>23</sup> and luxury restaurant in the early years were famous and popular places for the wealthy classes and social leaders to organize their social functions. The City Hall was also the venue of concerts and theatres for the wealthy classes and social leaders.

<sup>23</sup> The purpose of the exhibition hall at the Lower Block of City Hall includes **cocktail parties**, exhibitions and International conferences. (Source: Government Information Service. (1966) *City Hall, Hong Kong*. Hong Kong: Government Printer, p.2.)

**31. Social Life of Ordinary Chinese people:** Besides the wealthier classes and social leaders, the ordinary Chinese also bring their social life to Edinburgh Place. They hold social gatherings, go to the City Hall to enjoy cultural functions and meet their friends. They even enjoy their daily lunch boxes at the Edinburgh Place Complex.



Figure 16: Social Life in the 1960s.

Source: 《一九六七年 五周年——大會堂：香港的文化中心》.



Figure 17: Social life in the 1960-1970s.

Source: *City Hall 10<sup>th</sup> Anniversary Hong Kong Arts Festival 1972.*



Figure 18: Social Life in the 1960-1970s.

Source: 《一九六七年 五周年——大會堂：香港的文化中心》

正座地下是大堂，二樓設展覽廳，三樓則設有酒樓。二、三樓向海一面，全幅牆壁均為玻璃，使海港全景一覽無遺。

地下大堂，地方廣闊，音樂廳及戲院觀眾等候入場及散場之後均在該處聚散。大堂中最引人注意的是寬闊而不阻礙視線的樓梯。樓梯旁邊則設有寬敞的酒吧。

展覽廳面積有七千五百方呎，可供貿易及藝術展覽之用，並可通往俯視海旁的走廊。它像音樂廳一樣，可以迅速安裝同時傳譯的設備，把它改作會議廳。

劇迷，影迷，和音樂迷，紛紛湧到音樂廳和劇院；美術學生和歷史研究者，集中跑到展覽廳和博物館；學童携着書包來到兒童圖書館；白領階級則帶着午餐盒來到紀念花園。這各色各樣的人，他們的行業不同，志趣不同，年齡亦不同，但他們都有一共通點，就是他們都是大會堂的座上客，他們使「大會堂」成為名副其實的本港文化中心。

Figure 19: Description of the uses of the City Hall.

Source: 《一九六七年 五周年——大會堂：香港的文化中心》.



Figure 20: Lunch at Queen's Pier. Hong Kong people enjoying their daily inexpensive lunch boxes and a moment of reprise at the busy heart of the central business district.

Source: Tse Pak Chai

**32. Cultural Diversity and Non-Chinese Communities: Edinburgh Place has been a place of cultural diversity.** Edinburgh Place and specifically City Hall has been a consistent venue for different cultural activities and international cultural festivals that encourage inter-cultural exchange. Distinguished visiting artists all-over-the-world have visited, performed and exhibited at City Hall. Both Chinese and non-Chinese citizens go to City Hall to enjoy cultural activities. Since the colonial period until now, different ethnic groups and communities in Hong Kong have been using Edinburgh Place as their social gathering place.



Figure 21: Cultural event in the 1960s.

Source: 《一九六七年 五周年——大會堂：香港的文化中心》.



Figure 22: Cultural event in the 1970s.

Source: *City Hall 10<sup>th</sup> Anniversary Hong Kong Arts Festival 1972.*



Figure 23: Filipino weekly social gatherings at Queen's Pier.

Source: Kith Tsang.



Figure 24: Mongolian traders dancing and singing with locals at Queen's Pier.

Source: YC Chen

33. **Fifth theme: Edinburgh Place is significantly important for educational reform in the colonial period.** Protests of the Chinese language movement (中文運動)<sup>24</sup> and protests to demand the re-opening of the Precious Blood Golden Jubilee School<sup>25</sup> closed down by the government took place at Edinburgh Place. These social protests led to subsequent educational reforms in Hong Kong.
34. **Sixth theme: Edinburgh Place has been a significant historical and cultural landscape in post-war years.** It is a living heritage that continues to be used extensively today. It is not only a venue seeing Hong Kong's economic boom, public administration, but also development in culture and the arts. More importantly, it is THE place that demonstrates cultural diversity in Hong Kong.
35. **Cultural diversity** is an essential value recognized by the UNESCO and the World Commission on Culture and Development. Cultural diversity is “required by the principles of equity, human rights and self-determination” as well as sustainability.<sup>26</sup> As a cosmopolitan city, Hong Kong has migrants from different parts of the world. The recognition of places with historical and cultural significance of different ethnic groups is the responsibility of a cosmopolitan government claiming this as a world city. To conserve a place with historical and cultural significance for the migrants as historical and cultural landscape is a significant step in demonstrating the government's respect for the principle of cultural diversity.
36. Since the 1980s, the **Edinburgh Place has been a place where migrant workers have social gatherings, social program, and political functions.** The free library and computer service at the High Block of City Hall, the outdoor areas of City Hall, Star Ferry, Queen's Pier and the entire Edinburgh Place are the weekend gathering places of migrant workers since the 1980s. It is where non-Chinese migrant workers (mostly Filipino/a) gather during their weekend day off. These migrant worker gatherings are not merely exclusive. There are often active interactions with locals and tourists. They co-exist peacefully for the last 30 years, making Central an important “symbol” of inclusive multicultural cosmopolitanism for the grass-roots as well as the bankers and professionals. It is a place for all walks of life. The civic character of the Edinburgh Place Complex makes this inclusive multiculturalism possible and sustainable.

---

<sup>24</sup>鄧小樺、周思中、黃靜〈關於皇后，我有話說〉，《明報》2007年6月30日

<sup>25</sup> *The Gist*. “Mass march on school row”, 10 July 1978.

<sup>26</sup> UNESCO (1998) *World Culture Report 1998: Culture, Creativity and Market*, p.18.

## **Conclusion and Petition:**

37. **Edinburgh Place and historical continuity:** All happenings in this place have made the Edinburgh Place an indispensable landscape for Hong Kong people and has contributed to our local history. It serves as a set of “footprints” outlining the growth of the city. The relocation of the waterfront occasioned by reclamation makes this entire place more, not less, important as the landmark delineating a once-waterfront of historical significance. Edinburgh Place and its defining structures including City Hall, the Dias and Queen’s Pier can only serve their function if they remain genuine in their form, construction, and location.

38. **We therefore urge the Antiquities Advisory Board to confer grade I status on Edinburgh Place and its defining structures with the aim of seeing this entire “historical landscape” declared as a monument.**